



THE BOOK 2022





CONTACT US

Invision UK Ltd
Vinces Road, Diss, Norfolk, IP22 4YT

01359 270280

www.invisionuk.com
sales@invisionuk.com

originacoustics.com
originacoustics.net (dealer portal)

Copyright Origin Acoustics 2021

Rev 1.0 – 6/16/2021

DETAILS MATTER

We are Origin Acoustics. Performance loudspeakers with a high-fidelity heritage, nearly invisible aesthetics, and a commitment to genuine acoustic beauty. We believe that astounding audio is the home's beating heart. As musicians and filmmakers have poured their souls into their craft, so have we into ours. We strive to bring you the fullest experience, as intended by their creators. The minute nuance that not everyone gets to hear, that's where we live. In the details.



CONTENTS

6 WHY ORIGIN ACOUSTICS?

10 IN-CEILING LOUDSPEAKER COLLECTION

- 10 10" DIRECTORS
- 12 8" & 6 1/2" DIRECTORS
- 14 5" & 3" MINIMALS OPENING
- 16 PRODUCERS (TRADITIONAL MOUNT)

18 IN-WALL LOUDSPEAKER COLLECTION

- 18 THEATER & COMPOSER C60
- 20 LCR & CIW (TRADITIONAL MOUNT)

22 MARQUEE THEATER COLLECTION

24 SPECIALITY PRODUCT COLLECTION

- 24 SOUNDBARS
- 26 EXPLORER (MARINE PRODUCT)
- 30 THINFIT

32 SUBWOOFERS COLLECTION

- 32 ARCHITECTURAL SUBWOOFERS
- 34 FLOORSTANDING SUBWOOFERS

36 OUTDOOR COLLECTION

- 36 BOLLARD AESTHETIC (LANDSCAPE)
- 38 LANDSCAPE SATELLITES & ACOUSTIC LANDSCAPE SYSTEM
- 39 OUTDOOR SUBWOOFERS & ROCKS
- 40 SURFACE MOUNT LOUDSPEAKERS
- 41 RECOMMENDED BUNDLES

42 AMPLIFIER COLLECTION

DETAILED ARTICULATION



TRI-LINEAR CONFIGURATION®

We've built an authentic three-way loudspeaker for in-ceiling applications. The transducers are stacked linearly for precise imaging and elegantly hinged for an extended pivot. Perfect for creating life like sound stages from above.

ACCURATE SOUND-STAGING



MULTI-MOTION PIVOT® (MMP®)

The secret of Origin Acoustics' superior sound staging is our patented MMP™ technology. All of our five series and above loudspeakers can pivot up to thirty-degrees. So regardless of placement restrictions, you can direct the sound right to the listener.

MINIMAL

DISTORTION



VARIABLE DEPTH ABSORPTION LAYER®

Surrounding the interior baffle is a precisely moulded rubberised insert. Its purpose is to absorb errant frequencies that cause phase distortion. This design enhancement ensures that our long-throw woofers and DPSD™ tweeters are used to their full capabilities.

NEUTRAL

COLORATION



COMPRESSION MOLDED WOOFER BASKETS

Using the time tested and true technique of compression moulding, we designed and produced woofer baskets that are both highly stable and acoustically neutral. The result is a reduction in distortion without coloration from the basket itself.

HIGH SENSITIVITY



X-WAVE SURROUND®

When a speaker cone reaches its limit of movement and comes to a hard stop, unwanted waves ripple up and down the cone. Our X-Wave Woofer Surround progressively absorbs that impact, prevents unwanted sonic distortion, and improves overall fidelity.

RESOUNDING CLARITY



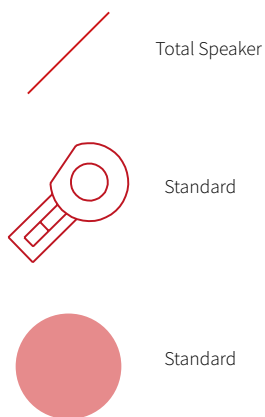
DUAL PLANE STABILIZED DIAPHRAGM™ (DPSD™)

This patented tweeter design improves high-frequency performance, and prevents distortion and increases loudness. This secondary stabilisation allows the driver to be crossed over at a much lower frequency resulting in improved dispersion and decreased distortion.

TOOL-LESS MOUNTING

NOT ALL CUTOUTS ARE EQUAL.

When it comes to the ratio of performance to grille size, Origin Acoustics' in-ceiling speakers always finish first. That's because, on average, our models have two more inches of woofer than the competitions'. We've made it possible with our tool-less mounting system. As you can see below, our woofers and surrounds begin where the other speakers are still putting their dog-ears.



Traditional 8" Dog-Ears and Woofer Overlay

Traditional 6.5" Dog-Ears and Woofer Overlay

**STANDARD CEILING SPEAKER WOOFER & DOG EARS OVERLAID ONTO
ORIGIN ACOUSTICS' SPEAKERS WITH THE SAME CUTOUT SIZE.**



DIRECTOR 10" - 6^{1/2}" LOUDSPEAKERS

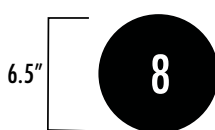
The Director Collection is the culmination of 100+ years of combined experience in producing the finest sounding in-ceiling speakers. Every aspect of the Director Collection is purposed towards producing full-range high fidelity music with as little visibility as possible. Utilising the finest materials and a unique pivoting assembly to direct the sound precisely where it is needed; these speakers become transparent points of sound in any room. Never before has this level of overall performance been available in an in-ceiling speaker.

IN-CEILING LOUDSPEAKER COLLECTION

ORIGIN ACOUSTICS WOOFER



TYPICAL WOOFER



TOOL LESS MOUNTING

10" DIRECTORS

CUTOUT DIAMETER 264mm



D109



D107



D105



D103DT

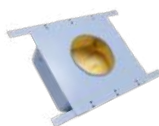


D101

10" DIRECTOR ACCESSORIES



BRACKET BR10
(10 PACK)



ENCLOSURE FB10



GRILLE GR10
ROUND



GRILLE SQ10
SQUARE

10" DIRECTOR SPECIFICATIONS

Product	Cut Out	Mounting Depth	Frequency Response	Woofer (s)	Tweeter	Power Handling	UOM
D109	264mm DIAMETER	158 mm	25Hz-20kHz +/- 3dB	10" & 4" KEVLAR	3/4" SILK DPSD™	50 - 150 W	1
D107	264mm DIAMETER	158 mm	28Hz-20kHz +/- 3dB	10" & 4" GLASS FIBER	3/4" SILK DPSD™	50 - 150 W	1
D105	264mm DIAMETER	158 mm	28Hz-20kHz +/- 3dB	10" & 4" GRAPHITE	3/4" SILK DPSD™	50 - 150 W	1
D103DT	264mm DIAMETER	137mm	37Hz-20kHz +/- 3dB	10" & 4" GRAPHITE	DUAL 1" ALUMINUM	50 - 150 W	1
D101	264mm DIAMETER	137mm	35Hz-20kHz +/- 3dB	10" & 4" POLY & RUBBER	1" SILK PIVOTING	50 - 100 W	1

8" & 6^{1/2}" DIRECTORS

CUTOUT DIAMETER 222mm



D89



D87



D85



D83



D83A



D83DT/SUR



D81-6 (6 PACK)



D81T-6 (6 PACK)



D69



D67



D65



D63



D63DT/SUR



D61-6 (6 PACK)

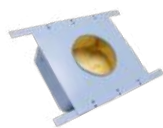


D61T-6 (6 PACK)



D61DT

8" & 6 1/2" ACCESSORIES



ENCLOSURE FBD82X6



REUSABLE BRACKET
REBR68
(10 PACK)



BZ68BC-8 BUNDLE
(8 PACK)



GRILLE SQ68
SQUARE

8" & 6 1/2" SPECIFICATIONS

Product	Cut Out	Mounting Depth	Frequency Response	Woofer	Tweeter	Power Handling	UOM
D89	222mm DIAMETER	142mm	30Hz-20kHz +/- 3dB	8" & 4" KEVLAR	3/4" SILK DPSD™	50 - 150 W	1
D87	222mm DIAMETER	142mm	34Hz-20kHz +/- 3dB	8" & 4" GLASS FIBER	3/4" SILK DPSD™	50 - 150 W	1
D85	222mm DIAMETER	142mm	36Hz-20kHz +/- 3dB	8" & 4" GRAPHITE	3/4" SILK DPSD™	50 - 150 W	1
D83	222mm DIAMETER	105mm	38Hz-20kHz +/- 3dB	8" GRAPHITE	1" ALUMINUM	50 - 150 W	1
D83A	222mm DIAMETER	105mm	38Hz-20kHz +/- 3dB	8" GRAPHITE	1" ALUMINUM	50 - 150 W	1
D83DT/SUR	222mm DIAMETER	109mm	38Hz-20kHz +/- 3dB	8" GRAPHITE	DUAL 1" ALUMINUM	50 - 150 W	1
D81-6	222mm DIAMETER	99mm	38Hz-20kHz +/- 3dB	8" POLY & RUBBER	1" SILK PIVOTING	50 - 150 W	6
D81T-6	222mm DIAMETER	134mm	38Hz-20kHz +/- 3dB	8" POLY & RUBBER	1" SILK PIVOTING	50 - 150 W	6
D69	222mm DIAMETER	155mm	40Hz-20kHz +/- 3dB	6 1/2" KEVLAR	3/4" SILK DPSD™	40 - 150 W	1
D67	222mm DIAMETER	155mm	43Hz-20kHz +/- 3dB	6 1/2" GLASS FIBER	3/4" SILK DPSD™	40 - 150 W	1
D65	222mm DIAMETER	155mm	45Hz-20kHz +/- 3dB	6 1/2" GRAPHITE	3/4" SILK DPSD™	40 - 150 W	1
D63	222mm DIAMETER	92mm	48Hz-20kHz +/- 3dB	6 1/2" GRAPHITE	1" ALUMINUM	40 - 150 W	1
D63DT/SUR	222mm DIAMETER	98mm	48Hz-20kHz +/- 3dB	6 1/2" GRAPHITE	DUAL 1" ALUMINUM	40 - 150 W	1
D61-6	222mm DIAMETER	92mm	48Hz-20kHz +/- 3dB	6 1/2" POLY & RUBBER	1" SILK PIVOTING	40 - 150 W	6
D61T-6	222mm DIAMETER	134mm	48Hz-20kHz +/- 3dB	6 1/2" POLY & RUBBER	1" SILK PIVOTING	40 - 150 W	6
D61DT	222mm DIAMETER	98mm	48Hz-20kHz +/- 3dB	6 1/2" POLY & RUBBER	DUAL 1" SILK PIVOTING	40 - 150 W	1



MINIMAL OPENING LOUDSPEAKERS

The increasing popularity of smaller recessed light openings has created a huge demand for speakers that “line up” with ceiling lighting. Delivering even under the meticulous constraints of the interior design community, the Director Minimal Opening System leaves the smallest visible imprint, whether the lights are square or round, without compromising sound quality. Minified 3” Director satellites and a unique bandpass in-ceiling subwoofer line up with the lights to form a musical arrangement with spotless coverage and full-range output.

IN-CEILING LOUDSPEAKER COLLECTION



5" DIRECTORS

CUTOUT DIAMETER 150mm



D59



D57DT/SUR



D57

BUNDLE



D57



DSUB6F5K



DSP3-150

5" ACCESSORIES



BRACKET BR5
(10 PACK)



GRILLE SQ5
SQUARE

3" DIRECTOR

CUTOUT DIAMETER 78mm



D39

BUNDLE



D39



DSUB6F3K



DSP3-150

3" ACCESSORIES



BRACKET BR3
(4 PACK)



GRILLE GR3
ROUND | SQUARE
INCLUDED

5" & 3" SPECIFICATIONS

Product	Cut Out	Mounting Depth	Frequency Response	Woofer	Tweeter	Power Handling	UOM
D59	150mm DIAMETER	95mm	68Hz-20kHz +/- 3dB	5 1/4" KEVLAR	1" SILK DPSD™	40 - 125 W	1
D57 DT/SUR	150mm DIAMETER	95mm	69Hz-20kHz +/- 3dB	5 1/4" GLASS FIBER	3/4" DUAL SILK DPSD™	40 - 125 W	1
D57	150mm DIAMETER	95mm	69Hz-20kHz +/- 3dB	5 1/4" GRAPHITE	1" SILK DPSD™	40 - 125 W	1
D39	78mm DIAMETER	100mm	100Hz-20kHz +/- 3dB	3" KEVLAR	1" SILK DPSD™	40 - 125 W	1
DSUB6F5K	78mm DIAMETER	100mm	33Hz-150kHz +/- 3dB	DUAL 6 1/2" POLY & RUBBER	N/A	100 - 250 W	1
DSUB6F3K	78mm DIAMETER	100mm	33Hz-150kHz +/- 3dB	DUAL 6 1/2" POLY & RUBBER	N/A	100 - 250 W	1



PRODUCER COLLECTION LOUDSPEAKERS

Carefully crafted with an impressive price to performance ratio, the Producer Collection is our entry-level offering that is anything but entry-level in sound quality. With five in-ceiling models there are a variety of options for any number of applications. The collection includes two dual-tweeter models producing stereo from a single speaker, a perfect solution for hallways, bathrooms and walk-in closets.



P60-80

TRADITIONAL DOG EARS

PRODUCER COLLECTION (CONTRACTOR GRADE)

CUTOUT DIAMETER 9 3/4"

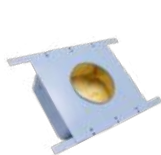


P80



P80DT

P80 | P80DT ACCESSORIES



ENCLOSURE FBP8



BRACKET BRP8
(10 PACK)

CUTOUT DIAMETER 8"



P61

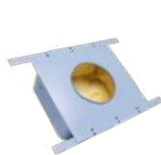


P60



P60DT

P61 | 60 | 60DT ACCESSORIES



ENCLOSURE FBP6



BRACKET BRP6
(10 PACK)

SPECIFICATIONS

Product	Cut Out	Mounting Depth	Frequency Response	Woofer	Tweeter	Power Handling	UOM
P80	247mm DIAMETER	96mm	38Hz-20kHz	8" POLY & RUBBER	1" SILK PIVOTING	40 - 100 W	2
P80DT	247mm DIAMETER	96mm	38Hz-20kHz	8" POLY & RUBBER	DUAL 1" SILK	40 - 100 W	1
P61	203mm DIAMETER	87mm	46Hz-20kHz	6 1/2" GRAPHITE	1" ALUMINUM PIVOTING	40 - 100 W	2
P60	203mm DIAMETER	87mm	48Hz-20kHz	6 1/2" POLY & RUBBER	1" SILK PIVOTING	40 - 100 W	2
P60DT	203mm DIAMETER	96mm	48Hz-20kHz	6 1/2" GRAPHITE	DUAL 1" SILK	40 - 100 W	1



COMPOSER LOUDSPEAKERS

We designed the Composer Collection as the perfect match for our Director Collection. Across each model, the levels of performance remain consistent. This unity allows you to timbre match our in-wall and in-ceiling models with confidence. In-wall loudspeakers are perfect for ear level applications, such as home theatre or music listening.

All models (aside from the CIW series) have spring-loaded dog-ears that snap into place with just a quick turn from a coin or the included guitar-pick.

IN-WALL LOUDSPEAKER COLLECTION

SLIM WOOFER

SLEEKER LOOK



SPRING INTO ACTION

PATENTED SPRINGLOCK™ MECHANISM



EQ ADJUSTMENT

CUSTOM TAILORED SOUND



COMPOSER IN-WALL COLLECTION

THEATER LOUDSPEAKERS

CUTOUT DIAMETER

198mm x 736mm



THTR69



THTR67

C60 LOUDSPEAKERS

CUTOUT DIMENSIONS 120mm x 280mm



C69



C67

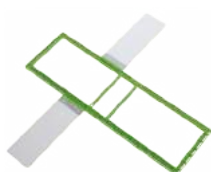


C65



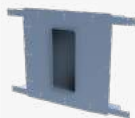
C63

THTR ACCESSORIES



BRACKET BRL30
(2 PACK)

C60 ACCESSORIES



ENCLOSURE FB12S



BRACKET BRL12
(10 PACK)



GRILLE GR60C

SPECIFICATIONS

Product	Cut Out	Mounting Depth	Frequency Response	Woofers	Tweeter	Power Handling	UOM
THTR69	198mm x 736mm	96mm	40Hz-20kHz	QUAD 6 1/2" KEVLAR	1" SILK DPSD™	50 - 200 W	1
THTR67	198mm x 736mm	96mm	40Hz-20kHz	QUAD 6 1/2" GLASS FIBER	1" SILK DPSD™	50 - 200 W	1
C69	120mm x 280mm	95mm	40Hz-20kHz	4" x 8" KEVLAR	1" SILK DPSD™	50 - 125 W	1
C67	120mm x 280mm	95mm	43Hz-20kHz	4" x 8" GLASS FIBER	1" SILK DPSD™	50 - 125 W	1
C65	120mm x 280mm	95mm	45Hz-20kHz	4" x 8" GRAPHITE	1" SILK DPSD™	50 - 125 W	1
C63	120mm x 280mm	95mm	45Hz-20kHz	4" x 8" GRAPHITE	1" POLY & RUBBER	50 - 125 W	1

COMPOSER IN-WALL COLLECTION

LCR 60 LOUDSPEAKERS

CUTOUT DIMENSIONS 168mm x 364mm



LCR69

LCR67

LCR65

LCR 30 LOUDSPEAKERS

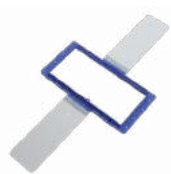
CUTOUT DIMENSIONS 114mm x 242mm



LCR39

LCR37

LCR 65 | 67 | 69 ACCESSORIES



BRACKET BRL15
(10 PACK)

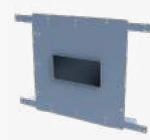


ENCLOSURE FB15S

LCR 37 | 39 ACCESSORIES



BRACKET BRL10
(10 PACK)



ENCLOSURE FB10S

SPECIFICATIONS

Product	Cut Out	Mounting Depth	Frequency Response	Woofer	Tweeter	Power Handling	UOM
LCR69	168mm x 364mm	95mm	51Hz-20kHz	2 x 6 1/2" KEVLAR	1" SILK DPSD™	40 - 150 W	1
LCR67	168mm x 364mm	95mm	53Hz-20kHz	2 x 6 1/2" GLASS FIBER	1" SILK DPSD™	40 - 150 W	1
LCR65	168mm x 364mm	95mm	55Hz-20kHz	2 x 6 1/2" GRAPHITE	1" SILK DPSD™	40 - 150 W	1
LCR39	114mm x 242mm	95mm	70Hz-20kHz	2 x 3 1/2" KEVLAR	1" SILK DPSD™	35 - 125 W	1
LCR39	114mm x 242mm	95mm	70Hz-20kHz	2 x 3 1/2" GLASS FIBER	1" SILK DPSD™	35 - 125 W	1

COMPOSER IN-WALL COLLECTION

TRADITIONAL MOUNT IN-WALL SPEAKERS

CUTOUT DIMENSIONS 273mm x 176mm



CIW65

CIW63

CIW61

CIW60-8

CIW ACCESSORIES



BRACKET BRL13
(10 PACK)

GRILLE GRCIW60

SPECIFICATIONS

Product	Cut Out	Mounting Depth	Frequency Response	Woofers	Tweeter	Power Handling	UOM
CIW65	273 x 176mm	76mm	45Hz-20kHz	6 1/2" GRAPHITE	1" SILK DPSD™	40 - 110 W	2
CIW63	273 x 176mm	76mm	45Hz-20kHz	6 1/2" GRAPHITE	1" ALUMINUM	40 - 110 W	2
CIW61	273 x 176mm	76mm	45Hz-20kHz	6 1/2" POLY & RUBBER	1" SILK PIVOTING	40 - 110 W	2
CIW60-8	273 x 176mm	76mm	45Hz-20kHz	6 1/2" POLY & RUBBER	1" PEI	40 - 110 W	8



MARQUEE COLLECTION

We've tasked our experienced architectural loudspeaker engineers with designing the ultimate home theatre system. The result is simply stunning. The Marquee Collection will exceed your expectations in every facet. Available both with both slim on-wall and nearly invisible in-wall configurations, they are easier to install than any other home theatre system in their class. That doesn't mean they won't blow you away. Between the powerful sub-woofer option, the ultra- sensitive custom drivers, and the high-pressure horn-loaded titanium tweeters, there's a fantastic home theatre experience waiting for you with the Marquee Collection.

MARQUEE HOME THEATER COLLECTION



MASSIVE
LOW END



PRE-
CONSTRUCTION



ULTRA-
SENSITIVE



RETROFITABLE

MARQUEE HOME CINEMA COLLECTION

IN-WALL MODELS



M5500IW



M5500IWNC



M3500IW



M3500IWNC

M5500IWNC REQUIRED WITH M5500IW

M3300IWNC REQUIRED WITH M3500IW

ON-WALL MODELS



M5500OW



M3500OW

PASSIVE SUB



M1500SUB

IN-CEILING SPEAKER

CUTOUT DIMENSIONS 264MM



M2500IC

SPECIFICATIONS

Product	Mounting Depth	Frequency Response	Woofer (s)	Tweeter	Power Handling	UOM
M5500OW	138mm	65Hz - 20kHz	DUAL 8" & 5" COATED PAPER CONE	1" TITANIUM HORN	150 - 300 W	1
M5500IW	88mm	65Hz - 20kHz	DUAL 8" & 5" COATED PAPER CONE	1" TITANIUM HORN	150 - 300 W	1
M5500IWNC	88mm	N/A	N/A	N/A	N/A	1
M3500OW	138mm	70Hz - 20kHz	DUAL 5" COATED PAPER CONE	1" TITANIUM HORN	150 - 300 W	1
M3500IW	88mm	70Hz - 20kHz	DUAL 5" COATED PAPER CONE	1" TITANIUM HORN	150 - 300 W	1
M3500IWNC	88mm	N/A	N/A	N/A	N/A	
M1500SUB	N/A	25Hz - 150Hz	15" COATED PAPER CONE ACCORDION SURROUND - FRONT FIRING	N/A	200 - 1000 W	1
M2500IC	158mm	70Hz - 150kHz	10" & 4" COATED PAPER CONE	3/4" TITANIUM MMP™	50 - 150 W	1



SOUNDBARS

Sound bars have become a critical element in family room and bedroom theatre systems. Simple to include and easy to install, they provide a huge improvement over the internal loudspeakers in a flat panel television. Reinforced with an in-wall, in-ceiling or free-standing subwoofer they can create an impressive, full-frequency sound field.

A perfect complement to extend both the Composer and Director Collections, the new SB3 from Origin fills the need for surface mounted front channels under a flat panel. A beautiful extruded aluminium cabinet and stylish cloth grille create a sophisticated silhouette.

PASSIVE SOUNDBAR COLLECTIONS

SOUNDBARS WITH FEET



RECOMMENDED BUNDLE



SPECIFICATIONS

Product	W x L x D	Frequency Response	Woofer	Tweeter	Power Handling	UOM
SB3	1067mm x 152mm x 76mm	65Hz-20kHz	3 1/2" FIBRE GLASS	1" SILK DPSD™	25 - 150 W	1
SB1	406mm x 152mm x 76mm	65Hz-20kHz	3 1/2" FIBRE GLASS	1" SILK DPSD™	25 - 150 W	1
SB .5	305mm x 152mm x 76mm	65Hz-20kHz	3 1/2" FIBRE GLASS	1" SILK DPSD™	25 - 150 W	1



EXPLORER COLLECTION

We designed the Explorer Collection for ocean conditions. This means yachts, beach homes, lake homes, cabins, showers, decks, anywhere wet, anywhere cold, anywhere hot. How? An extensive redesign of select existing in-ceiling and in-wall models.

The collection was made using a reinforced plastic resin that can withstand temperatures as high as 177°C and down to -20°C. The cross-over is coated and impermeable, all wiring is sealed, there are additional gaskets both on the bayonet ring and loudspeaker, and all hardware is stainless steel. The entire collection is also IP66-rated, so you can be rest assured of its quality.

IN-WALLS



CSUB10EX

Retro-fit Subwoofer

CUTOUT DIMENSIONS
120mm x 280mm



C65EX

ACCESSORIES



GRILLE GR60CEX



BRACKET BRL12
(10 PACK)

IN-CEILINGS



DBA10EX

Retro-fit Subwoofer

CUTOUT DIAMETER 264mm



D105EX



BRACKET BR10
(10 PACK)



GRILLE SQ10WX
SQUARE

CUTOUT DIAMETER 222mm



D85EX



D83DT/SUR EX



D83EX



D83AEX



D65EX

222mm ACCESSORIES



BAYONET RING KIT
BZ68WX-8
ROUND



REUSABLE BRACKET
REBR68
(10 PACK)



GRILLE
SQ68WX
SQUARE

SPEAKER SPECIFICATIONS

Product	Cut Out	Mounting Depth	Frequency Response	Woofer (s)	Tweeter	Power Handling	UOM
D10SEX	264mm DIAMETER	158mm	28Hz-20kHz +/- 3dB	10" & 4" GRAPHITE	3/4" ALUMINUM	50 - 150 W	1
D85EX	222mm DIAMETER	142mm	36Hz-20kHz +/- 3dB	8" & 4" GRAPHITE	3/4" ALUMINUM	50 - 150 W	1
D83EX	222mm DIAMETER	105mm	38Hz-20kHz +/- 3dB	8" GRAPHITE	1" ALUMINUM	50 - 150 W	1
D83AEX	222mm DIAMETER	105mm	38Hz-20kHz +/- 3dB	8" PRE-ANGLED GRAPHITE	1" ALUMINUM	50 - 150 W	1
D83DT/SUREX	222mm DIAMETER	105mm	38Hz-20kHz +/- 3dB	8" GRAPHITE	1" DUAL ALUMINUM	50 - 150 W	1
D65EX	222mm DIAMETER	116mm	45Hz-20kHz +/- 3dB	6 1/2" PIVOTING GRAPHITE	3/4" SILK DPSD™	40 - 150 W	1
C65EX	120mm x 280mm	95mm	45Hz-20kHz +/- 3dB	4" X 8" GRAPHITE	1" ALUMINUM	50 - 125 W	1

SUBWOOFER SPECIFICATIONS

Product	Cut Out	Mounting Depth	Frequency Response	Woofer	Dimensions	Power Handling	UOM
DBA10EX	264mm	158mm	35Hz - 200Hz	10" GLASS FIBER	286mm	50 - 150 W	1
CSUB10REX	333 x 333mm	89mm	30Hz - 250Hz	10" ANODIZED ALUMINUM	330 x 430 x 88mm	100 - 500 W	1







THINFIT LOUDSPEAKERS

The ThinFit Collection mounts with less than two inches of clearance, perfect for those oh-no moments when there's a surprise behind the drywall. The multiple woven glass-fibre woofers provide a surprising amount of low-end and volume, with the clarity and musicality you expect from Origin Acoustics. Available in three designs, two for ceiling applications and one D'Appolito model for in-wall use.

THE OH-NO SPEAKER



1 7/16" (36MM)



INTEGRATE INTO
ANY CEILING.

THINFIT LOUDSPEAKERS THICKNESS 36mm

IN-CEILING LOUDSPEAKERS

CUTOUT DIAMETER 222mm



TF37EX



TF37DT



36mm

IN-WALL LOUDSPEAKERS

CUTOUT DIMENSIONS 418mm X 118mm



TFIW37



36mm

IN-CEILING ACCESSORIES



BAYONET RING KIT
BZ68-8
ROUND



REUSABLE BRACKET
REBR68
(10 PACK)



GRILLE SQ68
SQUARE

SPECIFICATIONS

Product	Cut Out	Mounting Depth	Frequency Response	Woofers	Tweeter	Power Handling	UOM
TF37EX	222mm DIAMETER	36mm	120Hz-20kHz	Quad 3"	3/4" ALUMINUM	30 - 100 W	1
TF37DT	222mm DIAMETER	36mm	120Hz-20kHz	Dual 3"	DUAL 3/4" ALUMINUM	20 - 50 W	1
TFIW37	418mm x 118mm	36mm	90Hz-20kHz	Quad 3"	3/4" ALUMINUM	30 - 100 W	1



ARCHITECTURAL SUBWOOFERS

While all of our in-ceiling loudspeakers deliver most bass per cut-out, often, the listener wants more, so we have three great ways to do just that. The DSUB6 and DSUB8 are for pre-construction installation, each model featuring dual woofers and a tuned, port tube, can be quickly and safely stashed in the ceiling with only a matching grille visible. Or for retrofit integrations, the powerful DBA10EX can reach impressive lows.



ISOLATING CABINET



BUILT-IN CROSSOVER



ROUND & SQUARE
GRILLES

ARCHITECTURAL SUBWOOFER COLLECTION

IN-CEILING SUBWOOFERS

MATCHES IN-CEILING 10"



DBA10EX

MATCHES IN-CEILING 8" & 6"



DSUB8F8K

MATCHES IN-CEILING 8" & 6"



DSUB6F68K

MATCHES IN-CEILING 5"



DSUB6F5K

MATCHES IN-CEILING 3"



DSUB6F3K

IN-WALL SUBWOOFERS



CSUB10N

CSUB10NCE required with CSUB10N



CSUB10NCE

Pre-Construction Only



CSUB10REX

Retro-fit Subwoofer

SPECIFICATIONS

Product	Cut Out Size	Mounting Depth	Frequency Response	Woofer	Dimensions	Power Handling	UOM
DBA10EX	264mm	158mm	35Hz - 200Hz	10" GLASS FIBER	286mm DIAMETER	50 - 150 W	1
DSUB8F8K	222mm	240mm	29Hz - 150Hz	DUAL 8" POLY & RUBBER	240 x 356 x 650mm	100 - 250 W	1
DSUB6F68K	222mm	200mm	33Hz - 150Hz	DUAL 6 1/2" POLY & RUBBER	200 x 300 x 480mm	100 - 150 W	1
DSUB6F5K	149mm	200mm	33Hz - 150Hz	DUAL 6 1/2" POLY & RUBBER	200 x 300 x 480mm	100 - 150 W	1
DSUB6F3K	83mm	200mm	33Hz - 150Hz	DUAL 6 1/2" POLY & RUBBER	200 x 300 x 480mm	100 - 150 W	1
CSUB10N	268 x 268mm	88mm	30Hz - 250Hz	10" ALUMINUM	88 x 330 x 1120mm	100 - 500 W	1
CSUB10NCE	PRE- CONSTRUCTION	88mm	N/A	N/A	88 x 330 x 1120mm	100 - 500 W	1
CSUB10REX	333 x 333mm	89mm	30Hz - 250Hz	10" ANODIZED ALUMINUM	330 x 430 x 88mm	100 - 500 W	1



FLOOR STANDING SUBWOOFERS

Bass frequencies are the foundation of any audio performance. They fill the room with impact and drive emotion in every listening session. Our subwoofers deliver this dramatic and dynamic portion of the sound experience through the matching of rugged and powerful amplification with high-performance drivers. The subwoofer line is available in three sizes with 8-inch, 10-inch and 12-inch drivers powered with up to 600 watts of digital amplification.



THUMPING
BASS



PASSIVE RADIATORS



SHAKE-YOU-TO-
THE-CORE-LOW-
END

DEEP SUBWOOFER COLLECTION



SUBDD12



SUBD12



SUBD10



SUBD8

PERFORMANCE SUBWOOFER COLLECTION



SUBV12P



SUBV10P



SUBV8P

ACCESSORIES



WSK200 WIRELESS TRANSMISSION KIT

SPECIFICATIONS

Product	Dimensions	Frequency Response	Input	ACTIVE & PASSIVE Woofer	Power Output	UOM
SUBDD12	432 x 432 x 432mm	17Hz-180Hz	RCA XLR Speaker	DUAL 12" COMPOSITE	600 W	1
SUBD12	432 x 432 x 432mm	22Hz-180Hz	Analog Line Level	12" COMPOSITE	500 W	1
SUBD10	345 x 345 x 345mm	26Hz-180Hz	Analog Line Level	10" COMPOSITE	300 W	1
SUBD8	292 x 292 x 292mm	31Hz-180Hz	Analog Line Level	8" COMPOSITE	150 W	1
SUBV12P	375 x 396 x 423mm	21Hz-200Hz	Line Level LFE	12" RESIN COATED PAPER CONE	300 W	1
SUBV10P	337 x 358 x 385mm	28Hz-200Hz	Line Level LFE	10" RESIN COATED PAPER CONE	200 W	1
SUBV8P	298 x 319 x 346mm	32Hz-200Hz	Line Level LFE	8" RESIN COATED PAPER CONE	180 W	1
Product	Dimensions	Frequency Response	Transmitter Power	Working Distance	Operating Voltage	UOM
WSK200	70 x 18mm	20Hz-20kHz	<10dBm	40 meters	DC 5V/0.5A	1



LUXURY LANDSCAPE LOUDSPEAKERS

That time spent in your backyard, when the weather is perfect and you're surrounded by the people you love, that's the moment we designed these loudspeakers for. The high-quality weatherproof enclosures ensure that you'll always have just the right musical ambiance when you need it. Our detail-driven digital signal processing 70V Amplifiers purify your sound while providing long-range rock-solid power. And as the designers of the first luxury bollard loudspeaker, you can look and sound great in a sleek aluminium finish.

BOLLARD LOUDSPEAKER COLLECTION



LSB64RD-BRONZE180
LSB64RD-BRONZE360



LSB64RD-BLACK180
LSB64RD-BLACK360



LSB64RD-SILVER180
LSB64RD-SILVER360
LSB64RD

ROUND



LSB64SQ-BRONZE180
LSB64SQ-BRONZE360



LSB64SQ-BLACK180
LSB64SQ-BLACK360



LSB64SQ-SILVER180
LSB64SQ-SILVER360
LSB64SQ

SQUARE

SPECIFICATIONS

Name	Dispersion	Frequency Response	Woofer	Midrange	Tweeter	Power Handling	UOM
LSB64RD-360	360°	48Hz-20kHz	6 1/2" POLY & RUBBER	4 1/2" ALUMINUM	1" PEI	60 - 100 W	1
LSB64SQ-360	360°	48Hz-20kHz	6 1/2" POLY & RUBBER	4 1/2" ALUMINUM	1" PEI	60 - 100 W	1
LSB64RD-180	180°	48Hz-20kHz	6 1/2" POLY & RUBBER	4 1/2" ALUMINUM	1" PEI	60 - 100 W	1
LSB64SQ-180	180°	48Hz-20kHz	6 1/2" POLY & RUBBER	4 1/2" ALUMINUM	1" PEI	60 - 100 W	1

LANDSCAPE SATELLITES



LS44



LS64

PASSIVE
RADIATOR

MOUNTING ACCESSORIES



LSTM



LSFM



LSSS



LSLS

ACOUSTIC LANDSCAPE SYSTEM



AS51SYS

COMING SOON

EXTRA SPEAKER PAIR TO EXPAND THE SYSTEM



AS5SAT

COMING SOON

SPECIFICATIONS

Product	Dimensions	Impedance	Frequency Response	Woofer	Tweeter	Power Handling	UOM
LS64	279 x 178 x 178mm	8 OHM/70V	60Hz-20kHz	6 1/2" POLY & RUBBER, PASSIVE RADIATOR	1" TITANIUM	50 - 150 W	1
LS44	211 x 135 x 135mm	8 OHM/70V	80Hz-20kHz	4 1/2" POLY & RUBBER	3/4" TITANIUM	50 - 150 W	1
AS5SAT	163 DIA x 204 L x 573 mm H	16 OHM	55Hz-20kHz	5 1/2" POLY RUBBER	1" TITANIUM	50 W	1
AS51SUB	400 DIA x 326mm H	12 OHM	35Hz-120Hz	10" POLY RUBBER	N/A	200 W	1

LANDSCAPE SUBWOOFERS



OSUB12



OSUB10



OSUB8



OSUB10P

ROCK LOUDSPEAKERS



OSR85



OSR65

SUBWOOFER



OSR8SUB

SPECIFICATIONS

Product	Dimensions	Frequency Response	Woofers	Tweeter	Taps	Impedance	UOM
OSUB12	451 x 451 x 597mm	23Hz-100Hz	12" POLY& RUBBER		300W	8 ohm/70V	1
OSUB10	400 x 400 x 546mm	32Hz-100Hz	10" POLY& RUBBER		300W	8 ohm/70V	1
OSUB8	315 x 538 x 315mm	39Hz-100Hz	8" POLY& RUBBER		100W	8 ohm/70V	1
OSUB10P	ABOVE GROUND INSTALLATION	32Hz-150Hz	10" POLY& RUBBER		N/A	8 ohm/70V	1
OSR85	38 x 52 x 39mm	40Hz-20kHz	8" POLY & RUBBER	1" TITANIUM	60W 30W 15W 7.5W	8 ohm/70V	1
OSR65	29 x 43 x 35mm	50Hz-20kHz	6" POLY & RUBBER	1" TITANIUM	30W 15W 7.5W 3.7W	8 ohm/70V	1
OSR8SUB	38 x 52 x 39mm	35Hz-150kHz	8" POLY & RUBBER	N/A	120W 60W 30W 15W	8 ohm/70V	1

OUTDOOR ON-WALL LOUDSPEAKERS



OS67B



OS65B



OS65DTB



OS67W



OS65W



OS65DTW



OS57B



OS55B



OS55DTB



OS57W



OS55W



OS55DTW

OUTDOOR ON-WALL SPECIFICATIONS

Name	Dimensions	Impedance	Frequency Response	Woofer	Tweeter	Power Handling	UOM
OS67	182 x 172 x 334mm	6 OHM	52Hz-20kHz	4 X 8" GLASS FIBER, 2 X PASSIVE RADIATOR	1" ALUMINUM	50 - 150 W	1
OS65	182 x 172 x 334mm	6 OHM	58Hz-20kHz	4 X 8" GRAPHITE, 2 X PASSIVE RADIATOR	1" ALUMINUM	50 - 150 W	1
OS65DT	182 x 172 x 334mm	6 OHM	58Hz-20kHz	4 X 8" GRAPHITE, 2 X PASSIVE RADIATOR	1" DUAL ALUMINUM	50 - 150 W	1
OS57	182 x 172 x 266mm	6 OHM	52Hz-20kHz	5 1/4" GLASS FIBRE	3/4" ALUMINUM	50 - 125 W	1
OS55	182 x 172 x 266mm	6 OHM	63Hz-20kHz	5 1/4" GRAPHITE	3/4" ALUMINUM	50 - 125 W	1
OS55DT	182 x 172 x 266mm	6 OHM	63Hz-20kHz	5 1/4" GRAPHITE	3/4" DUAL ALUMINUM	50 - 125 W	1

RECOMMENDED BUNDLES



DSP3-150

+



2 X BOLLARDS



DSP3-700

+



4 X BOLLARDS



DSP3-700

+



8 X BOLLARDS



DSP3-700

+



LS44

+



LS55

+



OSUB10



DSP3-700

+



LS64

+



LSLS

+



OSUB12



DSP3-700

+



20 X LS64

+



20 X LSLS

+



2 X OSUB12



AMPLIFIERS

We offer three types of amplifiers, each with different uses to cover all types of loudspeakers and installations. The A-Series includes the A1250, and A2150. The DSP3 Series is for more demanding installations, with a dedicated subwoofer channel, even more power, and user-configurable DSP processing. Finally, the SubA Series is for making devoted, mono, passive subwoofers really shine.

MONO SUBWOOFER AMPLIFIERS



SUBA500

Product	Dimensions w/out Feet	Channels	Frequency Response	Inputs	Output Power Per Channel	UOM
SUBA500	429mm W x 226mm D x 45mm H	1	20Hz - 250Hz	LINE LEVEL & LFE	250 W @ 8 OHMS 500 W @ 4 OHMS	1



SUBA150

Product	Dimensions w/out Feet	Channels	Frequency Response	Inputs	Output Power Per Channel	UOM
SUBA150	429mm W x 226mm D x 45mm H	1	20Hz - 300Hz	LINE LEVEL & LFE	80 W @ 8 OHMS 150 W @ 4 OHMS	1

DSP 3-CHANNEL AMPLIFIERS



70V & 8 OHM

Name	Dimensions w/out Feet	Channels	Frequency Response	Inputs	Output Power Per Channel	UOM
DSP3-700	432mm W x 330mm D x 88mm H	3 (L/R/S)	20Hz - 20kHz	DIGITAL OPTICAL & ANALOG LINE LEVEL	500W @ 8 OHMS 700W @ 4 OHMS 700W @ 70V	1

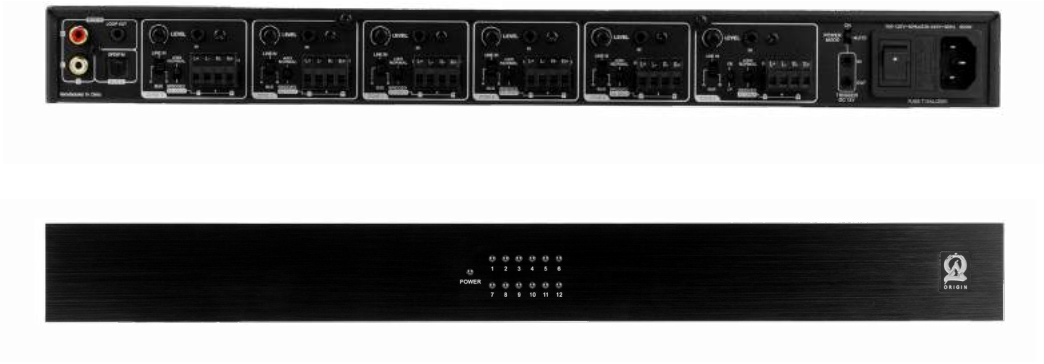
DSP3-700



Name	Dimensions w/out Feet	Channels	Frequency Response	Inputs	Output Power Per Channel	UOM
DSP3-150	432mm W x 241mm D x 88mm H	3 (L/R/S)	20Hz-20kHz	DIGITAL OPTICAL & ANALOG LINE LEVEL	L/R: 150W @ 4 OHMS S: 300W @ 4 OHMS	1

DSP3-150

DISTRIBUTED AUDIO AMPLIFIERS



Name	Dimensions w/out Feet	Channels	Frequency Response	Inputs	Output Power Per Channel	UOM
A1250	432mm W x 254mm D x 45mm H	12	20Hz-20kHz	DIGITAL OPTICAL & ANALOG LINE LEVEL	50W @ 8 OHMS 100W @ 4 OHMS	1

A1250



Name	Dimensions w/out Feet	Channels	Frequency Response	Inputs	Output Power Per Channel	UOM
DSP2-200	216mm W x 386mm D x 45mm H	2	20Hz-20kHz	DIGITAL OPTICAL & ANALOG LINE LEVEL	150 W @ 8 OHMS 200 W @ 4 OHMS	1

DSP2-200

NOTES

NOTES

Handwriting practice lines consisting of 20 horizontal dotted lines.

