

Pix are serious main front speakers for dedicated home cinemas. Providing exceptionally high acoustic power output over an extremely wide frequency range, with low harmonic distortion and excellent power handling – evident in the third harmonic, in the critical 1kHz – 3kHz speech region. The smooth response, acoustic power and dynamic range of the Pix are features not often found in one speaker.

The Pix features a 380mm high stiffness paper cone driver with a 77mm voice coil for increased linear excursion, and a powerful, vented magnet assembly designed for low distortion. Its specially engineered bass driver offers superb bass performance, high peak program power handling and high efficiency – capable of very high sound pressure levels. The massive ferrite magnet structure includes components engineered to achieve maximum efficiency. Symmetrical gap geometry, combined with large linear voice coil travel, ensures minimum distortion at all levels.

For high frequencies, the Pix features Krix's patented design, a 90 by 40 short throw horn, delivering optimum dispersion of 90 degrees horizontal and 40 degrees vertical, consistently maintained over the entire working bandwidth. It is driven by a compression driver with a 25mm throat, 32mm edge-wound aluminium voice coil and Nomex former. The constant directivity means far less sound is reflected off of side walls and ceilings, ensuring sound energy is focused directly at the listening position for better clarity.

The horn assembly is mounted to the bass cabinet with a solid mounting bracket, offering both vertical and horizontal tilt, while the crossover network – housed in the bass cabinet – uses professional grade, close tolerance components, for a smooth frequency response.

For the ultimate cinema experience at home, play it through Krix.

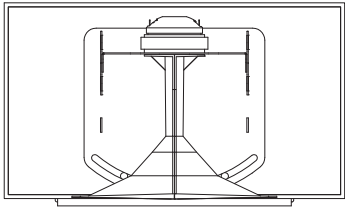
## FEATURES

- High acoustic power
- Excellent power handling
- Massive dynamic range

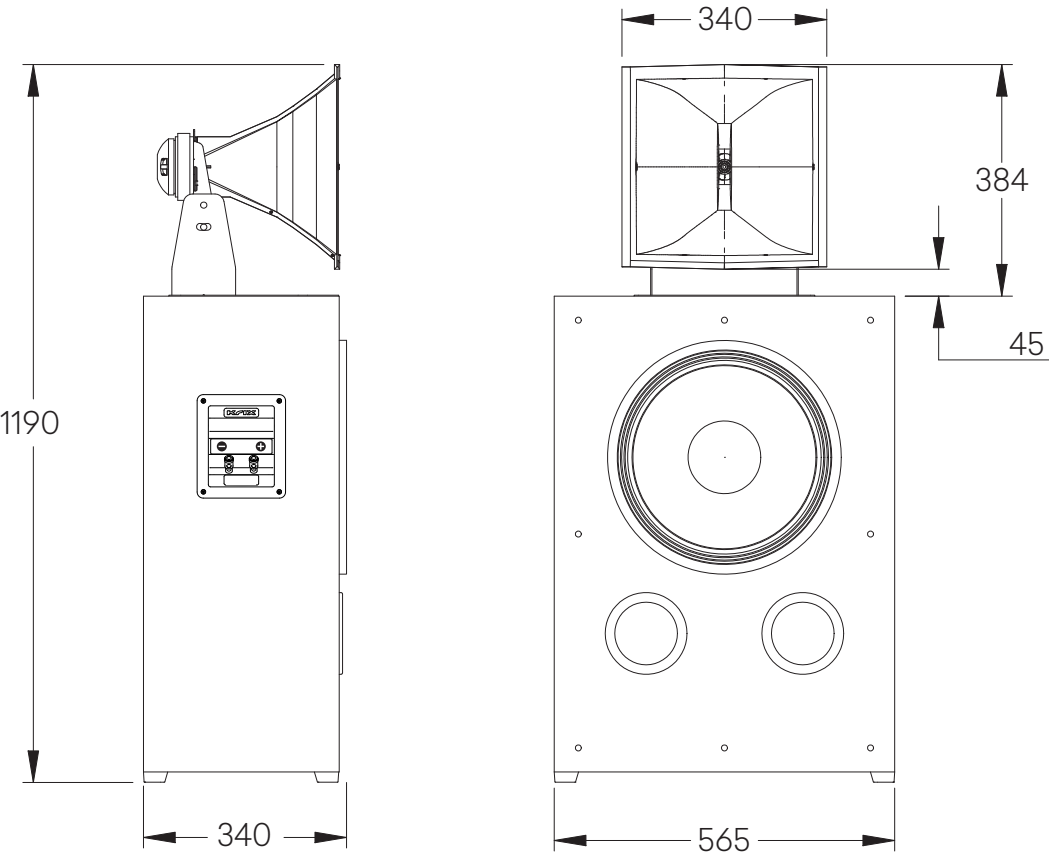


	Pix
<b>Frequency Range</b>	38 Hz - 16 kHz (In room response)
<b>Power Handling</b>	500 W RMS recommended maximum amplifier power
<b>Sensitivity</b>	95 dB (2.83 V/ 1m)
<b>Impedance</b>	Nominally 8 $\Omega$
<b>Configuration</b>	2-way
<b>Crossover point</b>	900Hz passive – contact Krix directly for bi-amped active filter parameters
<b>Low Frequency Driver</b>	Single 380mm (15") high stiffness paper cone driver with 77mm (3") voice coil of optimal length for increased linear excursion, wound on high temperature apical former and powerful vented magnet assembly designed for low distortion
<b>High Frequency Driver</b>	A Krix patented designed 90° x 40° short throw horn driven by a compression driver with a 1" throat, coated titanium diaphragm, polyimide surround.
<b>Input Terminals</b>	200 amp proprietary terminal posts, accepting up to 6mm diameter cable
<b>Dimensions</b>	1190mm high x 565mm wide x 340mm deep
<b>Net weight</b>	38 kg

DETAILED DIMENSIONS



Top View



Side View

Front View



The Flix are serious main front speakers for a serious dedicated home cinema. Providing exceptionally high acoustic power output over an extremely wide frequency range, with low harmonic distortion and excellent power handling – evident in the third harmonic, in the critical 1kHz – 3kHz speech region. The smooth response, acoustic power and dynamic range of the Pix are features not often found in one speaker.

The Flix features dual 380mm high stiffness paper cone drivers with 77mm voice coils for increased linear excursion, and powerful, vented magnet assemblies designed for low distortion. Its specially engineered bass driver offers superb bass performance, high peak program power handling and high efficiency – capable of very high sound pressure levels. The massive ferrite magnet structure includes components engineered to achieve maximum efficiency. Symmetrical gap geometry, combined with large linear voice coil travel, ensures minimum distortion at all levels.

For high frequencies, the Flix features Krix's patented design, a 90 by 40 short throw horn, delivering optimum dispersion of 90 degrees horizontal and 40 degrees vertical, consistently maintained over the entire working bandwidth. It is driven by a compression driver with a 25mm throat, 32mm edge-wound aluminium voice coil and Nomex former. The constant directivity means far less sound is reflected off of side walls and ceilings, ensuring sound energy is focused directly at the listening position for better clarity.

The horn assembly is mounted to the bass cabinet with a solid mounting bracket, offering both vertical and horizontal tilt, while the crossover network – housed in the bass cabinet – uses professional grade, close tolerance components, for a smooth frequency response.

For the ultimate cinema experience at home, play it through Krix.

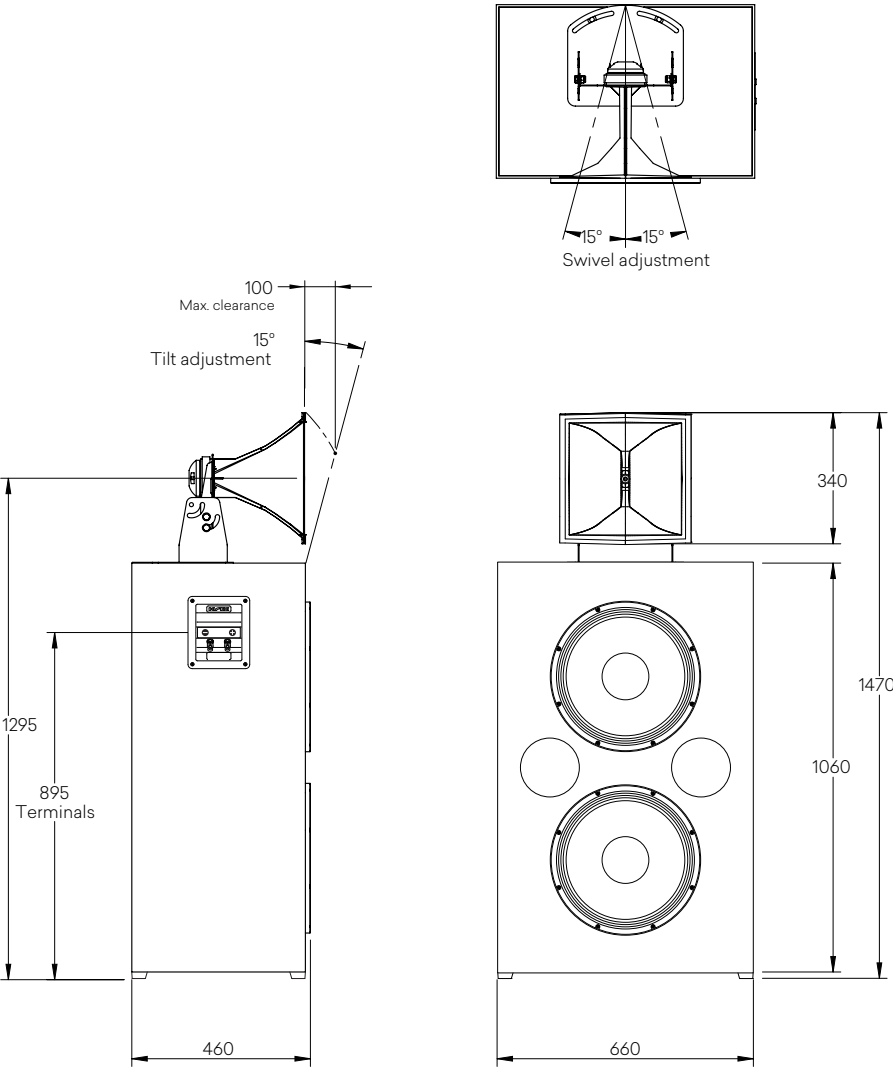
## FEATURES

- High acoustic power
- Excellent power handling
- Massive dynamic range



	Flix
Frequency Range	38 Hz - 16 kHz (In room response)
Power Handling	1000 W RMS recommended maximum amplifier power
Sensitivity	101 dB (2.83 V/ 1m)
Impedance	Nominally 4 Ω
Configuration	2-way
Crossover point	900Hz passive – contact Krix directly for bi-amped active filter parameters
Low Frequency Driver	Dual 380mm (15") high stiffness paper cone drivers with 77mm (3") voice coil of optimal length for increased linear excursion, wound on high temperature apical former and powerful vented magnet assembly designed for low distortion
High Frequency Driver	A Krix patented designed 90° x 40° short throw horn driven by a compression driver with a 1" throat 1¼" edge-wound aluminium voice coil and Nomex former
Input Terminals	200 amp proprietary terminal posts, accepting up to 6mm diameter cable
Dimensions	1470mm high x 660mm wide x 460mm deep
Net weight	57 kg

DETAILED DIMENSIONS



The Theatrix are serious main front speakers for a truly serious dedicated home cinema experience. It is a 3 way, bi-amped screen loudspeaker suitable for medium to large size rooms. The addition of a dedicated midrange section overcomes the demands placed on the high frequency component, enhancing performance.

By splitting the signal into three dedicated sections, the loudspeaker produces superior vocal intelligibility in the critical 1kHz – 3kHz speech region. It's not often that you find smooth response, acoustic power, and dynamic range in one model of speaker, but with the Theatrix you can have it all.

The Theatrix features a 380mm high stiffness paper cone driver with a 77mm voice coil for increased linear excursion, and a powerful, vented magnet assembly designed for low distortion. Its specially engineered bass driver offers superb bass performance, high peak program power handling and high efficiency – capable of very high sound pressure levels.

The dedicated midrange is delivered by a Krix designed 90 by 40 degree constant directivity horn with a 77mm throat, driven by a 165mm curvilinear paper cone driver with large voice coil and neodymium magnet.

For high frequencies, the Theatrix features another of Krix's patented design, a 90 by 40 horns. It is driven by a compression driver with a 25mm throat, 32mm edge-wound aluminium voice coil and Nomex former. The constant directivity means far less sound is reflected off of side walls and ceilings, ensuring sound energy is focused directly at the listening position for better clarity.

The horn assemblies are mounted to the bass cabinet with a solid mounting bracket which offers both vertical and horizontal tilt. The electronic filter network for the horn section is housed in a separate, well-ventilated enclosure, mounted at the rear of the midrange horn. A separate electronic crossover network is required between the bass driver and horn elements.

For the ultimate cinema experience at home, play it through Krix.

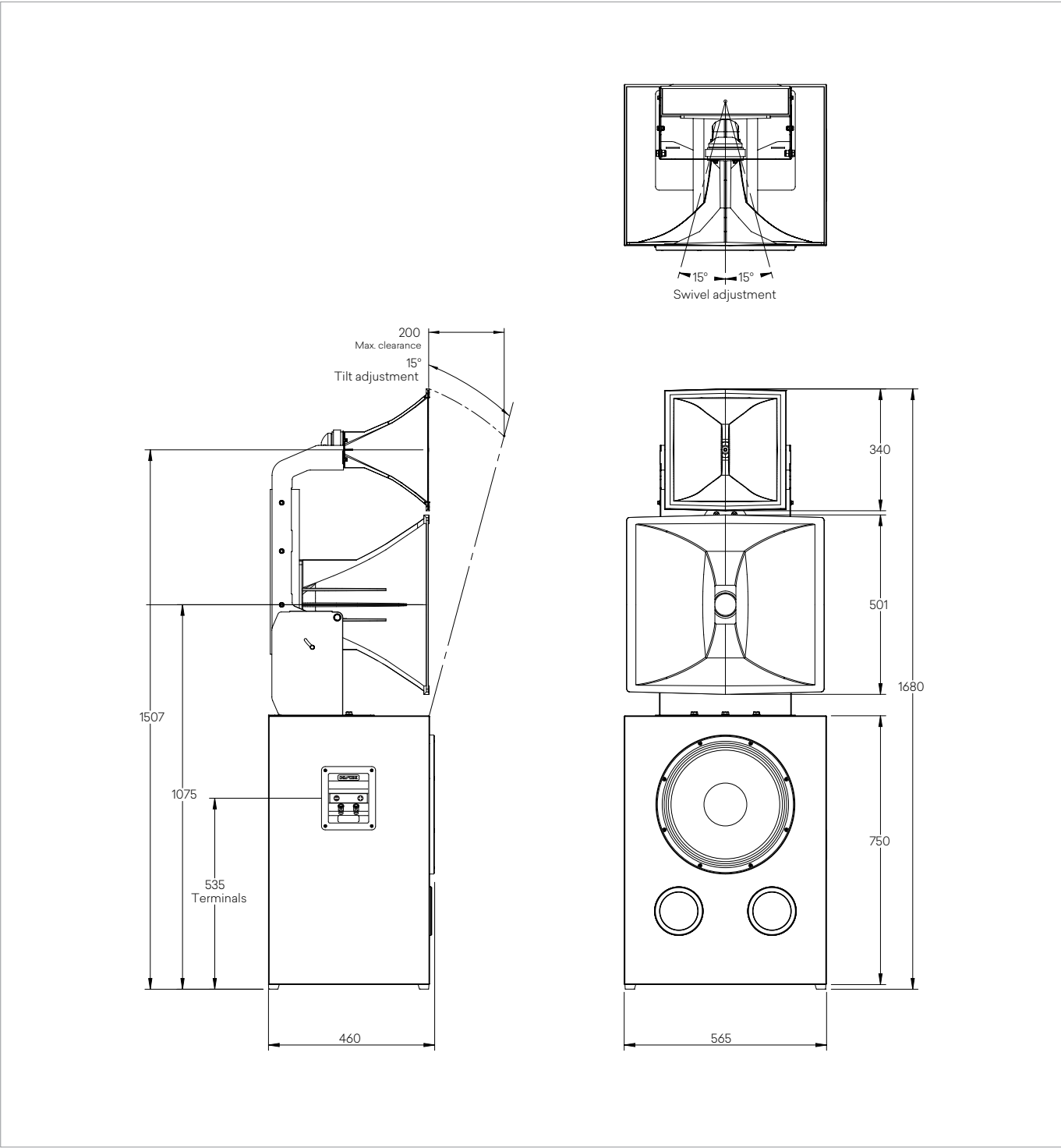
## FEATURES

- High acoustic power
- Superior vocal intelligibility
- Massive dynamic range



	Theatrix
<b>Frequency Range</b>	38 Hz - 16 kHz (In room response)
<b>Power Handling</b>	500 W RMS recommended maximum amplifier power
<b>Sensitivity</b>	96dB (2.83 V/ 1m)
<b>Impedance</b>	Nominally 8 Ω
<b>Configuration</b>	3-way
<b>Crossover point</b>	1600 Hz passive (MF/HF) – contact Krix directly for bi-amped active filter parameters
<b>Low Frequency Driver</b>	Single 380mm (15") high stiffness paper cone drivers with 77mm (3") voice coil of optimal length for increased linear excursion, wound on high temperature apical former and powerful vented magnet assembly designed for low distortion
<b>Mid Frequency Driver</b>	A Krix patented designed 90° x 40° horn driven by a 3" throat driven by a single 165mm (6½") curvilinear paper cone driver. A 45mm (1¼") edge-wound aluminium voice coil, with vented Neodymium magnet assembly and heat dissipation to minimise power compression at high sound output levels
<b>High Frequency Driver</b>	A Krix patented designed 90° x 40° horn driven by a compression driver with a 1" throat 1¼" edge-wound aluminium voice coil and Nomex former
<b>Input Terminals</b>	200 amp proprietary terminal posts, accepting up to 6mm diameter cable
<b>Dimensions</b>	1680mm high x 565mm wide x 460mm deep
<b>Net weight</b>	64 kg

DETAILED DIMENSIONS



The Theatrix are serious main front speakers for a truly serious dedicated home cinema experience. It is a 3 way, bi-amped screen loudspeaker suitable for medium to large size rooms. The addition of a dedicated midrange section overcomes the demands placed on the high frequency component, enhancing performance.

By splitting the signal into three dedicated sections, the loudspeaker produces superior vocal intelligibility in the critical 1kHz – 3kHz speech region. It's not often that you find smooth response, acoustic power, and dynamic range in one model of speaker, but with the Theatrix you can have it all.

The Theatrix features a 380mm high stiffness paper cone driver with a 77mm voice coil for increased linear excursion, and a powerful, vented magnet assembly designed for low distortion. Its specially engineered bass driver offers superb bass performance, high peak program power handling and high efficiency – capable of very high sound pressure levels.

The dedicated midrange is delivered by a Krix designed 90 by 40 degree constant directivity horn with a 77mm throat, driven by a 165mm curvilinear paper cone driver with large voice coil and neodymium magnet.

For high frequencies, the Theatrix features another of Krix's patented design, a 90 by 40 horns. It is driven by a compression driver with a 25mm throat, 32mm edge-wound aluminium voice coil and Nomex former. The constant directivity means far less sound is reflected off of side walls and ceilings, ensuring sound energy is focused directly at the listening position for better clarity.

The horn assemblies are mounted to the bass cabinet with a solid mounting bracket which offers both vertical and horizontal tilt. The electronic filter network for the horn section is housed in a separate, well-ventilated enclosure, mounted at the rear of the midrange horn. A separate electronic crossover network is required between the bass driver and horn elements.

For the ultimate cinema experience at home, play it through Krix.

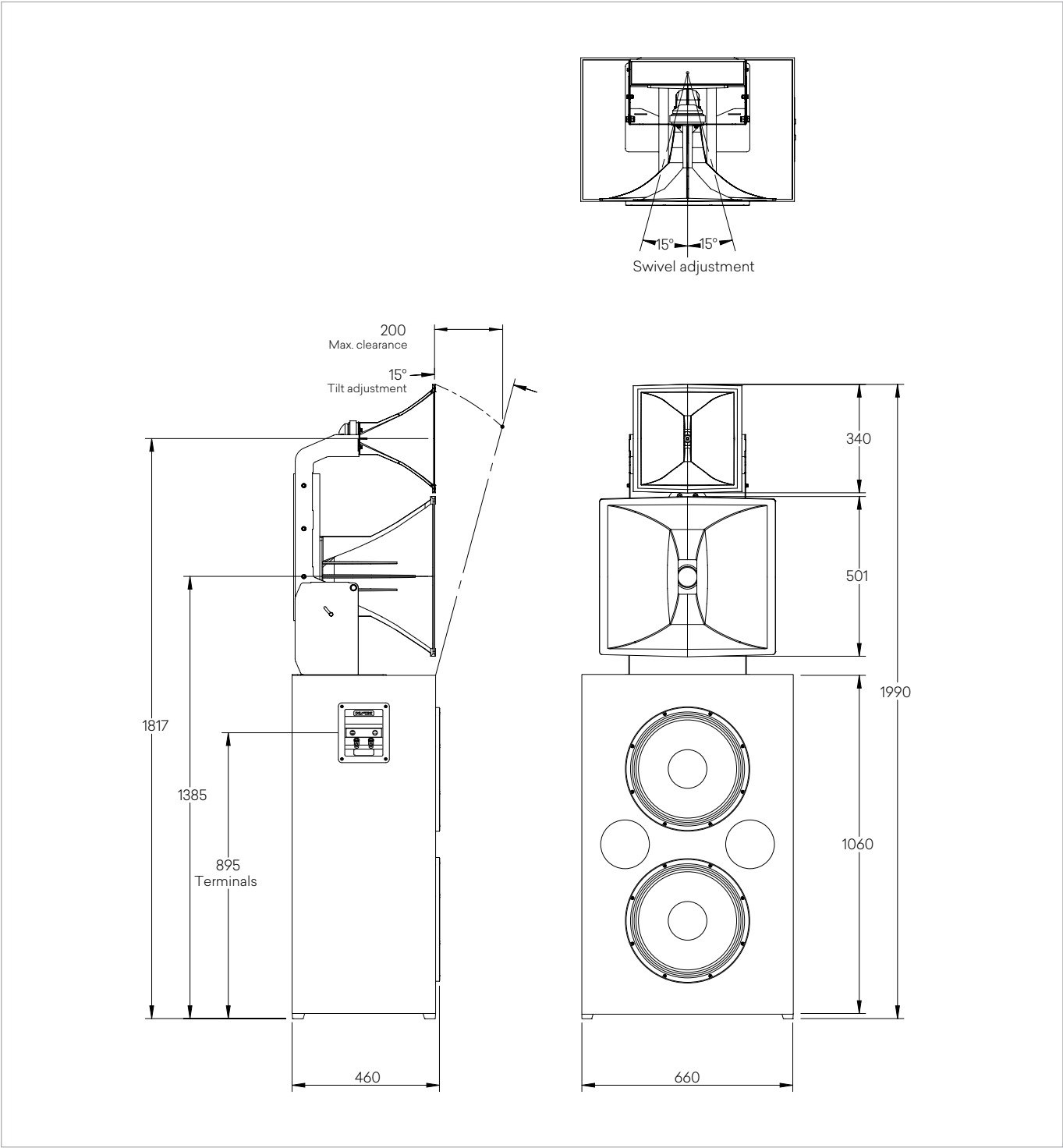
## FEATURES

- High acoustic power
- Superior vocal intelligibility
- Massive dynamic range



	Cinematix
<b>Frequency Range</b>	38 Hz - 16 kHz (In room response)
<b>Power Handling</b>	1000 W RMS recommended maximum amplifier power
<b>Sensitivity</b>	101 dB (2.83 V/ 1m)
<b>Impedance</b>	Nominally 4 Ω
<b>Configuration</b>	3-way
<b>Crossover point</b>	900Hz passive (MF/HF) – contact Krix directly for bi-amped active filter parameters
<b>Low Frequency Driver</b>	Dual 380mm (15") high stiffness paper cone drivers with 77mm (3") voice coil of optimal length for increased linear excursion, wound on high temperature apical former and powerful vented magnet assembly designed for low distortion
<b>Mid Frequency Driver</b>	A Krix patented designed 90° x 40° horn driven by a 3" throat driven by a single 165mm (6½") curvilinear paper cone driver. A 45mm (1¾") edge-wound aluminium voice coil, with vented Neodymium magnet assembly and heat dissipation to minimise power compression at high sound output levels
<b>High Frequency Driver</b>	A Krix patented designed 90° x 40° horn driven by a compression driver with a 1" throat 1¾" edge-wound aluminium voice coil and Nomex former
<b>Input Terminals</b>	200 amp proprietary terminal posts, accepting up to 6mm diameter cable
<b>Dimensions</b>	1990mm high x 660mm wide x 460mm deep
<b>Net weight</b>	83 kg

DETAILED DIMENSIONS



[krix.com](http://krix.com)

ADELAIDE | 14 Chapman Road, Hackham, SA, 5163, Australia

T +61 8 8384 3433

F +61 8 8384 3419

[listen@krix.com.au](mailto:listen@krix.com.au)

Cinematix Specification Sheet-004

Pg. 2 of 2



For an all-encompassing cinema sound in a conveniently sized package, the Phonix replicates the wedge-shaped design used in Krix's commercial cinema surround speakers, allowing it to be mounted high and away from the listener, to maintain excellent pattern control and audio coverage to all listening positions.

Designed for on wall side and rear surround sound, the Phonix offers high power handling with low frequency extension down to 45Hz.

The hefty 165mm bass driver has a 33mm voice coil wound on high powered aluminium former, with ventilated spider and aluminium flux stabilisation ring for low distortion. The paper cone and surround of the bass driver have been developed to provide the smoothest possible response and a dynamic and non-fatiguing vocal mid-band.

The high frequency drive unit is a specially-damped, high power, 26mm doped fabric dome tweeter. Combined with the crossover network which has been designed and built using close-tolerance, professional-grade components, the resulting sound is exceptionally smooth and well controlled.

Complete with a braced, critically-damped enclosure, finished with a neat black cloth grille, the Phonix is a beautifully designed benchmark for surround loudspeaker reproduction.

For the ultimate cinema experience at home, play it through Krix.

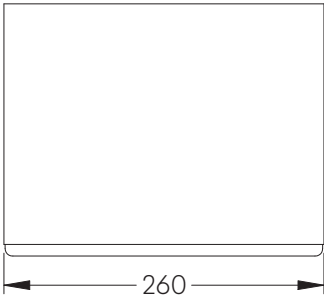


## FEATURES

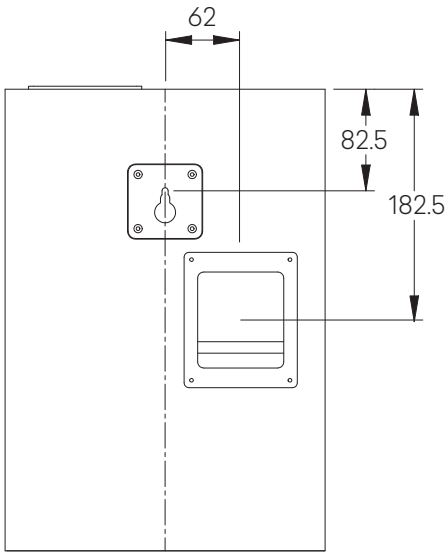
- 15 degree angled front baffle
- Easy wall mounting
- Compact design

	Phonix
Frequency Range	45 Hz - 20 kHz (in room response)
Power Handling	50 - 150 Watts RMS recommended amplifier power
Sensitivity	88 dB (2.83V / 1m)
Impedance	8 OhmS
Configuration	2-Way
Crossover point	1.8 kHz
Low Frequency Driver	Single 165mm (6 1/2") paper cone driver. 33mm (1 1/4") voice coil wound on high powered kapton former, with ventilated magnet assembly and copper shorting ring for low distortion
High Frequency Driver	26mm (1") doped fabric dome with large roll surround. Ferro fluid cooled
Enclosure Type	Bass reflex, front vented
Input Terminals	Gold plated binding posts
Dimensions	375mm high x 260mm wide x 205mm deep at the top (109mm deep at the bottom)
Net Weight	7 kg

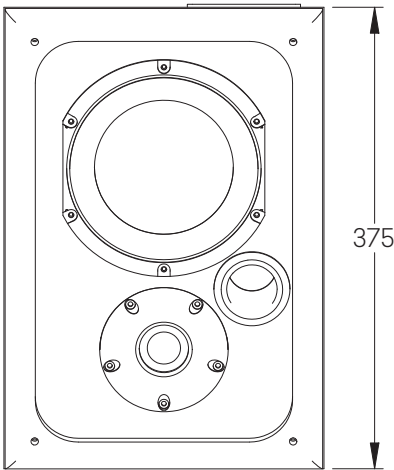
DETAILED DIMENSIONS



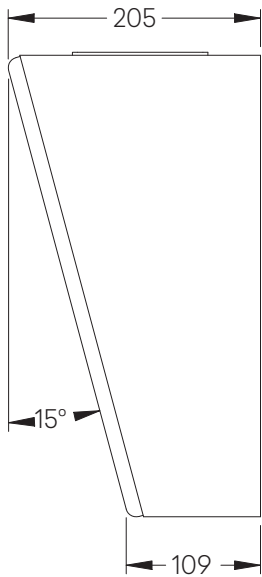
Top View



Rear view



Front View



Side view



For an all-encompassing cinema sound in a conveniently sized package, the Phonix Flat, with its slim flat baffle design, provides an immersive home theatre experience as a side surround, rear surround or ceiling effect speaker.

Best for use in 5.1, 7.1 or Dolby® Atmos™ configurations, this dedicated home cinema speaker offers high power handling with low frequency extension down to 45Hz in a neat 122mm deep package.

The hefty 165mm bass driver has a 33mm voice coil wound on high powered aluminium former, with ventilated spider and aluminium flux stabilisation ring for low distortion. The paper cone and surround of the bass driver have been developed to provide the smoothest possible response and a dynamic and non-fatiguing vocal mid-band.

The high frequency drive unit is a specially-damped, high power, 26mm doped fabric dome tweeter. Combined with the crossover network which has been designed and built using close-tolerance, professional-grade components, the resulting sound is exceptionally smooth and well controlled.

Complete with a braced, critically-damped enclosure, finished with a neat black cloth grille and an optional low profile mounting bracket for wall or ceiling mounting, the Phonix Flat is a versatile new benchmark for surround loudspeaker reproduction.

For the ultimate cinema experience at home, play it through Krix.

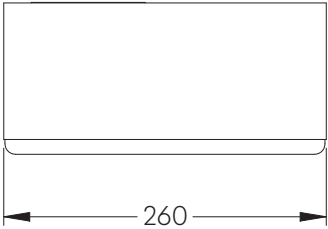


## FEATURES

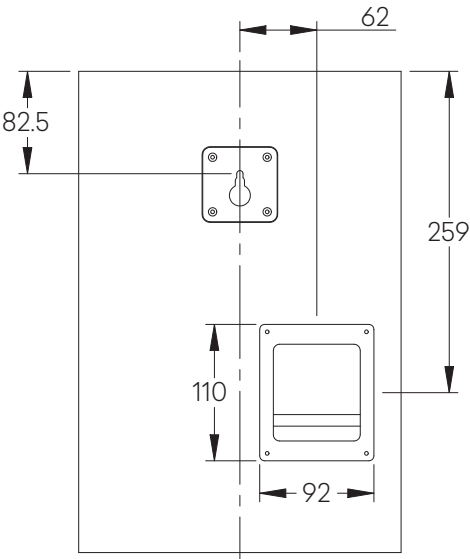
- Immersive surround or ceiling effects
- Easy wall mounting
- Compact, slim design

	Phonix Flat
Frequency Range	45 Hz - 20 kHz (in room response)
Power Handling	50 - 150 Watts RMS recommended amplifier power
Sensitivity	88 dB (2.83V / 1m)
Impedance	8 OhmS
Configuration	2-Way
Crossover point	1.8 kHz
Low Frequency Driver	Single 165mm (6 1/2") paper cone driver. 33mm (1 1/4") voice coil wound on high powered kapton former, with ventilated magnet assembly and copper shorting ring for low distortion
High Frequency Driver	26mm (1") doped fabric dome with large roll surround. Ferro fluid cooled
Enclosure Type	Bass reflex, front vented
Input Terminals	Gold plated binding posts
Dimensions	388mm high x 260mm wide x 122mm deep
Net Weight	6 kg

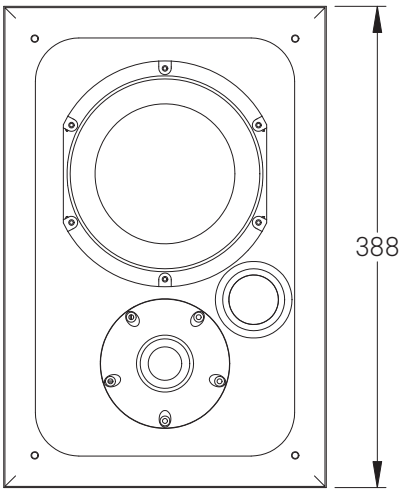
DETAILED DIMENSIONS



Top View



Rear View



Front View



Side View



For powerful home cinema sound that is sensitive enough to produce a whisper but controlled enough to reduce distortion on loud on-screen effects, the Ultraphonix is the perfect partner to your home cinema system.

A dedicated home cinema on wall side and rear surround speaker, the Ultraphonix offers high power handling and high sensitivity with low distortion, as well as bass extension down to 40Hz. Replicating the wedge-shaped design used in Krix's commercial cinema surround speakers with a 15-degree baffle, the Ultraphonix can be mounted high and away from the listener to maintain excellent pattern control and audio coverage to all listening positions.

The massive 205mm bass driver featuring a 38mm voice coil has been developed to provide the smoothest possible response with a dynamic and non-fatiguing vocal mid-band. The high frequency drive unit is a specially-damped, high power, 26mm doped fabric dome tweeter that combines with the bass driver via a crossover network that has been designed and built using close-tolerance, professional-grade components, for an exceptionally smooth and well controlled sound.

Complete with an enclosure that is braced, critically-damped, and finished with a neat black cloth grille, this on wall speaker has it all.

For the ultimate cinema experience at home, play it through Krix.

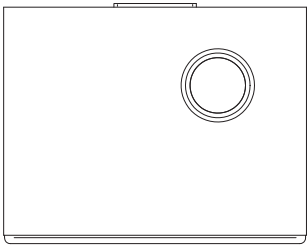


## FEATURES

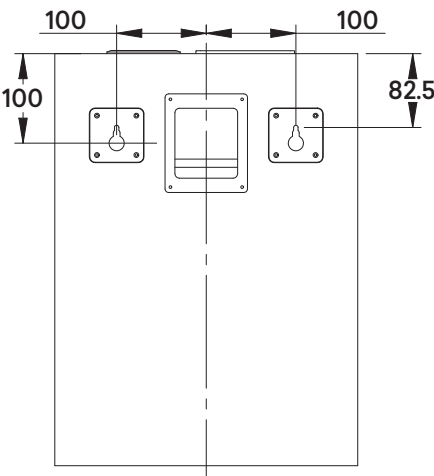
- 15 degree angled baffle
- High sensitivity, very low distortion
- Easy wall mounting

	Ultraphonix
Frequency Range	40 Hz - 20 kHz (in room response)
Power Handling	50 - 200 Watts RMS recommended amplifier power
Sensitivity	90 dB (2.83V / 1m)
Impedance	8 OhmS
Configuration	2-Way
Crossover point	1.8 kHz
Low Frequency Driver	Single 205mm (8") paper cone driver. 38mm (1½") voice coil wound on high powered aluminium former, with ventilated magnet assembly and copper shorting ring for low distortion
High Frequency Driver	26mm (1") doped fabric dome with large roll surround. Ferro fluid cooled
Enclosure Type	Bass reflex, top vented
Input Terminals	Gold plated binding posts
Dimensions	460mm high x 338mm wide x 263mm deep
Net Weight	10 kg

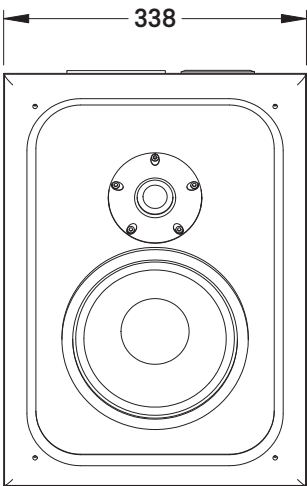
DETAILED DIMENSIONS



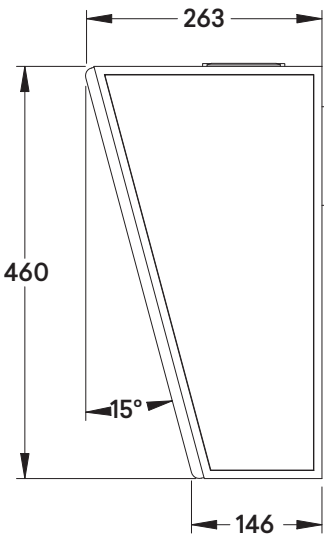
Top View



Rear View



Front View



Side View



Designed specifically for on wall use in dedicated home cinemas, the Megaphonix uses high power handling and high sensitivity drivers to deliver all the impact and dynamics you need for the ultimate cinematic effect.

The 255mm bass driver has a 50mm voice coil and has been developed to offer low harmonic distortion, especially in the critical midband. The paper cone and surround of the bass driver have been developed to provide the smoothest possible response.

The high frequency drive unit is a specially-damped, high power, 26mm doped fabric dome tweeter, and is coupled with Krix's proprietary waveguide to provide consistently-maintained optimum dispersion of 90 degrees horizontal and 40 degrees vertical over the entire bandwidth. The combined high frequency response is exceptionally smooth and well controlled – a new benchmark in loudspeaker reproduction.

Designed with a 15 degree angled front baffle, the Megaphonix is ideal for wall mounting for rear or side surrounds and provides excellent pattern control and audio coverage to all listening positions. The enclosures are braced and critically damped to improve bass extension, and come with a black material grille and rear key hook mounts for easy installation.

The Megaphonix is the on wall member of a five-speaker family, allowing you to combine it with main or surround speakers for a connected, clear and smooth sound experience.

For the ultimate cinema experience at home, play it through Krix.

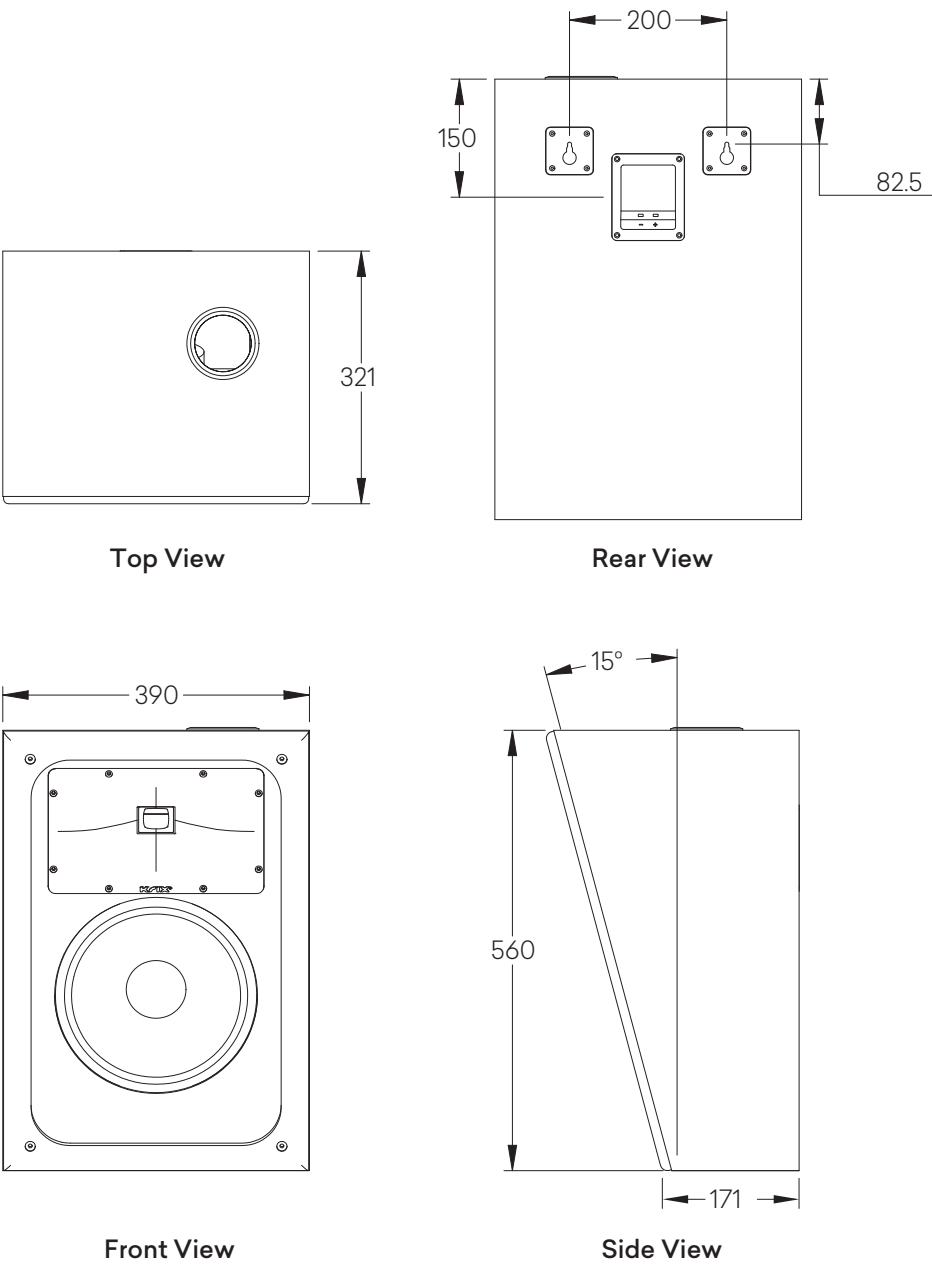


## FEATURES

- Impact and dynamics for a real home cinema experience
- High sensitivity, very low distortion
- Precise pattern control

Megaphonix	
Frequency Range	40 Hz - 20 kHz (in room response)
Power Handling	50 - 250 Watts RMS recommended amplifier power
Sensitivity	95 dB (2.83V / 1m)
Impedance	8 OhmS
Configuration	2-Way
Crossover point	1.8 kHz
Low Frequency Driver	Single 255mm (10") paper cone driver. 50mm (2") voice coil wound on high powered kapton former, with ventilated magnet assembly and copper shorting ring for low distortion
High Frequency Driver	26mm (1") doped fabric dome with large roll surround. Ferro fluid cooled. Coupled to a Krix designed 90 x 40 short throw waveguide
Enclosure Type	Bass reflex, top vented
Input Terminals	Gold plated binding posts
Dimensions	560mm high x 390mm wide x 321mm deep at the top (171mm deep at the bottom)
Net Weight	15 kg

DETAILED DIMENSIONS





The Megaphonix Flat speaker is designed specifically for on wall use in a dedicated home cinema, using high power handling and high sensitivity drivers. Delivering all the impact and dynamics you need for a real home cinema experience without the need for expensive AV equipment, the Megaphonix Flat will complete your cinema experience.

The 255mm bass driver has a 50mm voice coil and has been developed to offer low harmonic distortion, especially in the critical midband. The paper cone and surround of the bass driver have been developed to provide the smoothest possible response.

The high frequency drive unit is a specially-damped, high power, 26mm doped fabric dome tweeter, and is coupled with Krix's proprietary waveguide to provide consistently-maintained optimum dispersion of 90 degrees horizontal and 40 degrees vertical over the entire bandwidth. The combined high frequency response is exceptionally smooth and well controlled – a new benchmark in loudspeaker reproduction.

All contained in a slim-lined 162mm deep package, ensuring space behind the screen is kept to a minimum, the Megaphonix Flat enclosure is braced and critically damped to improve bass extension. It also comes with a black material grille and rear key hook mounts for easy installation.

For those looking for space saving solutions, the Megaphonix Flat is the on wall member of a four-speaker family, allowing you to combine it with main or surround speakers for a connected, clear and smooth sound experience.

For the ultimate cinema experience at home, play it through Krix.

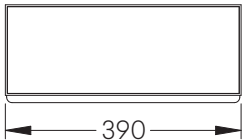
## FEATURES

- Impact and dynamics for a real home cinema experience
- High sensitivity, very low distortion
- Precise pattern control

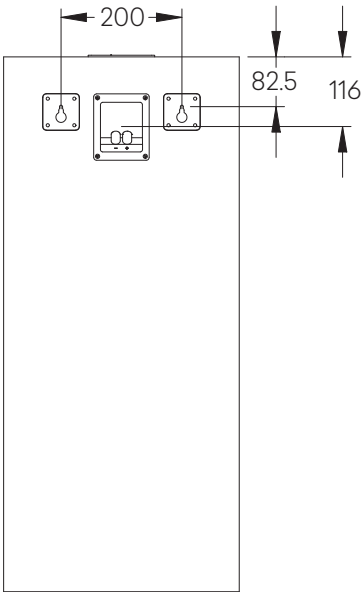


Megaphonix Flat	
Frequency Range	40 Hz - 20 kHz (in room response)
Power Handling	50 - 250 Watts RMS recommended amplifier power
Sensitivity	95 dB (2.83V / 1m)
Impedance	8 OhmS
Configuration	2-Way
Crossover point	1.8 kHz
Low Frequency Driver	Single 255mm (10") paper cone driver. 50mm (2") voice coil wound on high powered kapton former, with ventilated magnet assembly and copper shorting ring for low distortion
High Frequency Driver	26mm (1") doped fabric dome with large roll surround. Ferro fluid cooled. Coupled to a Krix designed 90 x 40 short throw waveguide
Enclosure Type	Bass reflex, front vented
Input Terminals	Gold plated binding posts
Dimensions	885mm high x 390mm wide x 162mm deep
Net Weight	15 kg

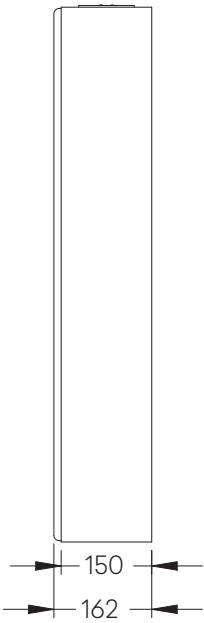
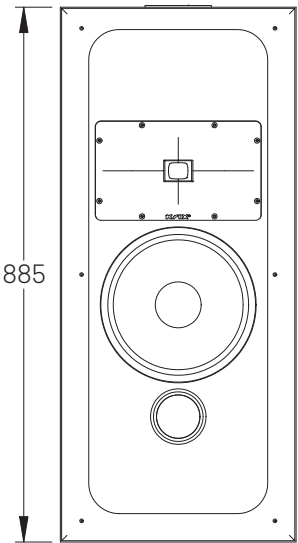
DETAILED DIMENSIONS



Top View



Rear View



The Megaphonix In-Wall are designed specifically for in room use in dedicated home cinemas. Using high power handling and high sensitivity drivers, these speakers will deliver all the impact and dynamics you need for a real home cinema experience without the need for a big wattage power amplifier.

The 255mm bass driver has a 50mm voice coil and has been developed to offer low harmonic distortion, especially in the critical midband. The paper cone and surround of the bass driver have been developed to provide the smoothest possible response. The high frequency drive unit is a specially-damped, high power, 26mm doped fabric dome tweeter, and is coupled with Krix's proprietary waveguide to provide consistently-maintained optimum dispersion of 90 degrees horizontal and 40 degrees vertical over the entire working bandwidth.

The combined high frequency response is exceptionally smooth and well controlled – a new benchmark in loudspeaker reproduction.

Finished with a powder coated steel front baffle for easy retrofitting, Megaphonix In-Wall speakers are braced and critically damped to improve bass extension and can be used without a grille behind an acoustically transparent screen or with a grille if it's in full view.

The Megaphonix In-Wall is the in-wall member of a five-speaker family, allowing you to combine it with main or surround speakers for a connected, clear and smooth sound experience.

For the ultimate cinema experience at home, play it through Krix.

## FEATURES

- Impact and dynamics for a real home cinema experience
- High sensitivity, very low distortion
- Precise pattern control



Megaphonix In-Wall	
Frequency Range	40 Hz - 20 kHz (in room response)
Power Handling	50 - 250 Watts RMS recommended amplified power
Sensitivity	95 dB (2.83V / 1m)
Impedance	8 OhmS
Configuration	2-Way
Crossover point	1.8 kHz
Low Frequency Driver	Single 255mm (10") paper cone driver. 50mm (2") voice coil wound on high powered kapton former, with ventilated magnet assembly and copper shorting ring for low distortion
High Frequency Driver	26mm (1") doped fabric dome with large roll surround. Ferro fluid cooled. Coupled to a Krix designed 90 x 40 short throw waveguide
Enclosure Type	Bass reflex, front vented
Input Terminals	Gold plated binding posts
Dimensions	885mm high x 390mm wide x 150mm deep cabinet, 965mm high x 470mm wide x 2mm thick faceplate
Cut-Out Dimensions	890mm high x 395mm wide recommended
Net Weight	23 kg

**krix.com**

ADELAIDE | 14 Chapman Road, Hackham, SA, 5163, Australia

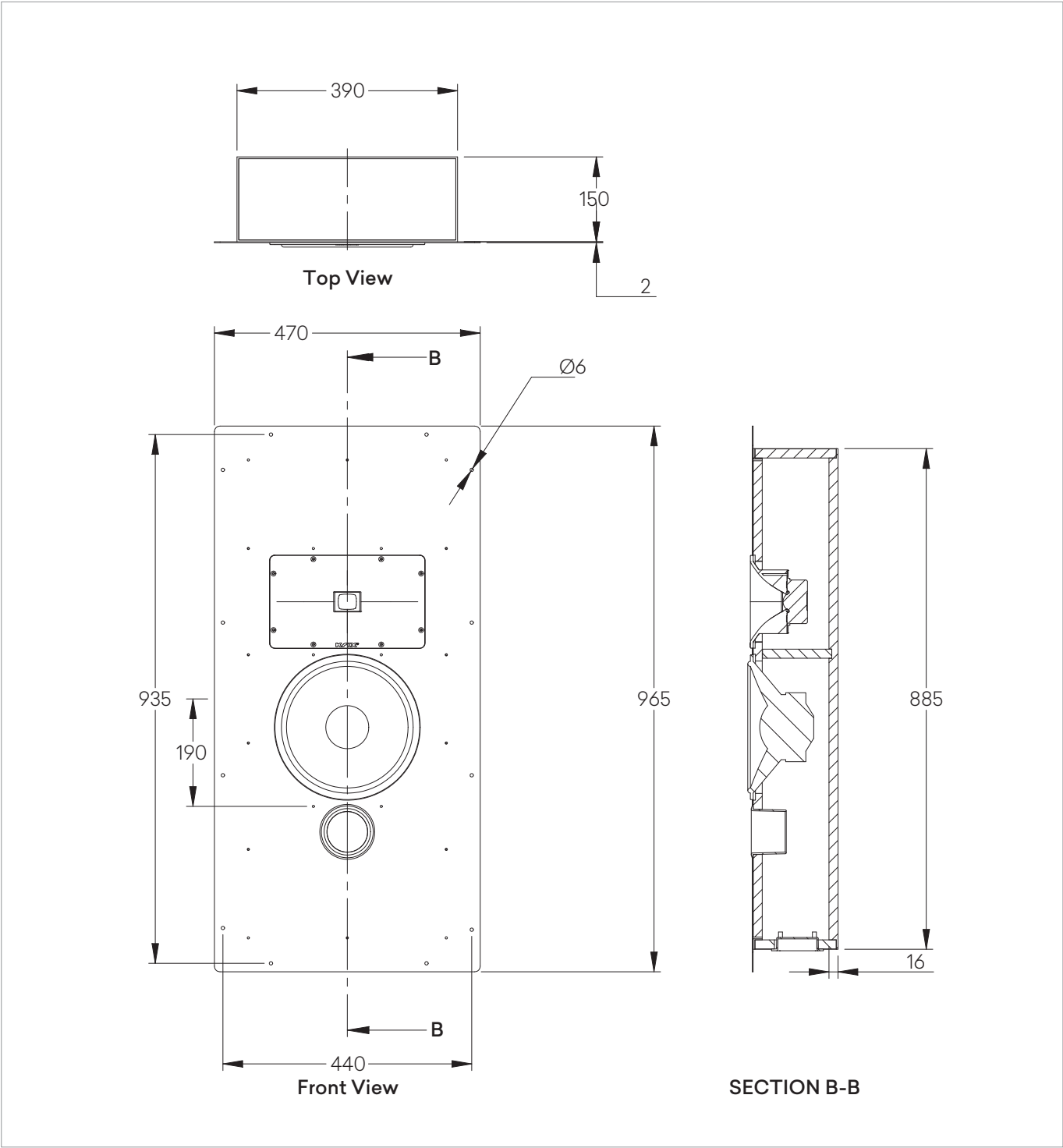
T +61 8 8384 3433

F +61 8 8384 3419

listen@krix.com.au

Pg. 1 of 2

DETAILED DIMENSIONS



Hear every on-screen rumble or explosion with the Cyclonix Passive, as it recreates the lowest possible audible frequencies for the ultimate cinema experience at home.

For those who prefer a subwoofer with no built-in amplifier, the Cyclonix Passive provides a passive subwoofer experience, using a high excursion bass driver mounted in a high quality MDF enclosure. The proprietary Krix 'X' brace system is used to eliminate panel resonances.

The giant 455mm bass driver features a 100mm voice coil, powerful vented magnetic circuit and double spider assembly. The optimum cooling system provides fast heat exchange and reduced thermal power compression.

The dual front-vented enclosure is tuned to achieve maximum output, resulting in an incredibly efficient subwoofer for high drive level applications, while the unit's proprietary Krix rubber feet provide improved acoustic isolation on hard and soft floor surfaces.

A separate power amplifier is also required for this subwoofer and can be connected to the LFE output of any AV processor or receiver.

For the ultimate cinema experience at home, play it through Krix.

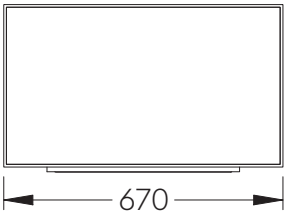
## FEATURES

- Incredibly efficient for maximum output
- 18" driver with extra-long excursion
- Heavily braced enclosure

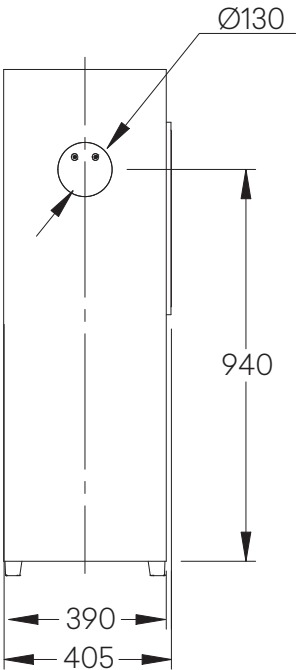


Cyclonix Passive	
Frequency Range	20 Hz - 250 Hz (in room response)
Amplified Power	250 - 1400 Watts RMS recommended amplified power
Sensitivity	100 dB SPL (2.83V / 1m)
Output	127 dB maximum SPL in room response
Inputs	200 amp proprietary terminal posts, accepting up to 6mm diameter cable
Low Frequency Driver	Single 455mm (18") paper cone driver. 100mm (4") edge-wound copper voice coil, dual spider assembly and vented magnet assembly
Enclosure Type	Bass reflex, front vented
Dimensions	1200mm high x 670mm wide x 405mm deep
Net Weight	62 kg

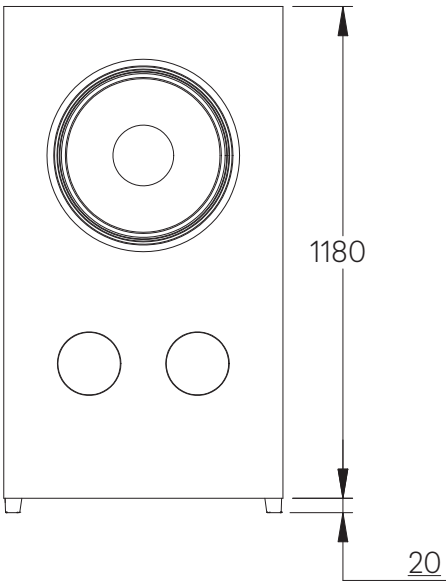
DETAILED DIMENSIONS



Top View



Side View



Front View



The Cylonix Active is the ultimate subwoofer for recreating the lowest possible audible frequencies in your dedicated home cinema.

With a built-in ICEpower® class D amplifier, the Cylonix Active uses a high excursion bass driver mounted in a high quality MDF enclosure featuring the proprietary Krix 'X' brace system to eliminate panel resonances.

The giant 455mm bass driver features a 100mm voice coil, powerful vented magnetic circuit and double spider assembly. The optimum cooling system provides fast heat exchange and reduced thermal power compression. The built-in ICEpower® class D amplifier also delivers 450 watts RMS.

The dual front-vented enclosure is tuned to achieve maximum output, resulting in an incredibly efficient subwoofer for high drive level applications, while the front mounted control panel with LED display allows for easy adjustment and use. The unit also includes proprietary Krix rubber feet for improved acoustic isolation on hard and soft floor surfaces.

For the ultimate cinema experience at home, play it through Krix.

## FEATURES

- Incredibly efficient for maximum output
- 18" driver with extra-long excursion
- Exclusive Krix digital sub amplifier (KDSA)



Cyclonix Active	
Frequency Range	20 Hz - 250 Hz (in room response)
Amplified Power	450 Watts RMS
Output	127 dB maximum SPL in room response
Inputs	Stereo line level RCA. High level binding posts
Low Frequency Driver	Single 455mm (18") paper cone driver. 100mm (4") edge-wound copper voice coil, dual spider assembly and vented magnet assembly
Enclosure Type	Bass reflex, front vented
Power On/Off	Adjustable Auto/Always On, 12V trigger setting
Phase Select	0° or 180°
Low Pass Filter	50Hz-200Hz or bypass
Dimensions	1200mm high x 670mm wide x 405mm deep
Net Weight	63 kg

DETAILED DIMENSIONS

